

DP Series Current Transformers

Models Available

- DP-23** Split Core Current Transformer
- DP-58** Split Core Current Transformer
- DP-88** Split Core Current Transformer
- DP-812** Split Core Current Transformer
- DP-816** Split Core Current Transformer

Product Features

- Split core ideal for retro-fitting
- Moulded ABS plastic housing
- 5 Amp secondary
- Accuracy class 1
- Mounting feet
- Screw type terminals
- Terminal cover included
- Busbar clamp kit included

DP split core current transformers are available for primary currents between 100 Amps and 2500 Amps, offering reliability and class 1 accuracy making them suitable for a large range of industrial applications.

The DP series current transformers are available in five different physical sizes all with a rectangular aperture and due to their split core design are ideal for retro-fitting. They are enclosed in a protective ABS housing ensuring excellent mechanical strength and electrical insulation.

The DP series current transformers have fixing feet, a busbar clamp kit and terminal cover as standard.

For transforming high AC current to a proportional 5 Amp output

Specification

Reference Standard:

- IEC185, UNE EN 60044-1, VDE0414

Accuracy:

- See range data table

Primary Input Current:

- 0-100A to 0-2500A (see data table)

Secondary Current:

- 0-5A (0-1A by special order)

Overload:

- To BS3938 - IEC 185

Operating Voltage:

- 720Vac maximum

Test Voltage:

- 3kV rms 50Hz for 1 minute

Frequency:

- 50/60Hz

Burden:

- See range data table

Enclosure:

- Self extinguishing to UL94V0
- Busbar mounting with clamp
- M5 screw terminals
- IP40 enclosure code
- Insulation class E

Operating Temperature:

- -10°C to 50°C

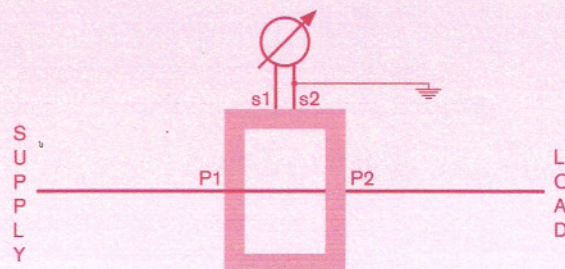
Weight:

- See range data table

Markings:

- CE marked

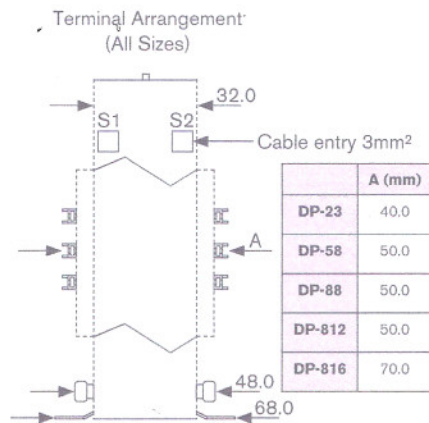
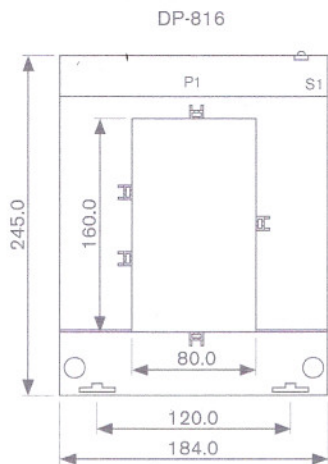
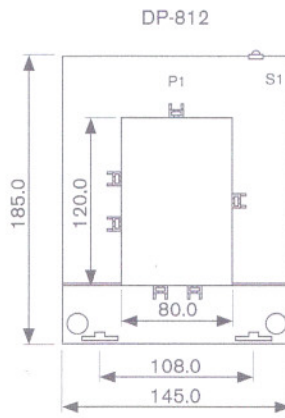
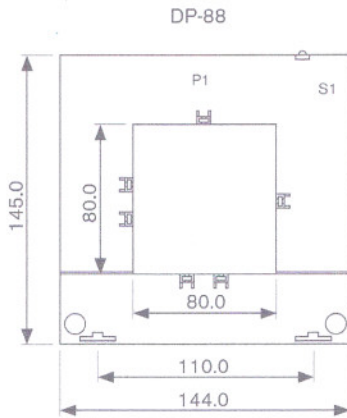
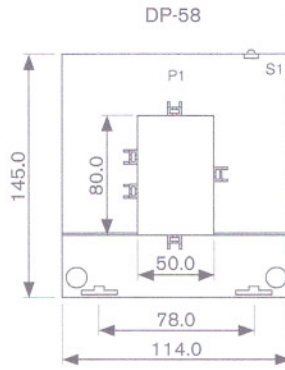
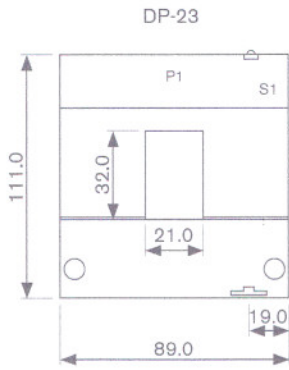
Connections



Ordering information

Code	Model & Size	Ratio
DP-23	Split Core CT	100/5, 150/5, 200/5, 250/5
DP-58	Split Core CT	300/5, 400/5, 500/5, 600/5, 800/5
DP-88	Split Core CT	1000/5
DP-812	Split Core CT	1200/5, 1500/5, 1600/5
DP-816	Split Core CT	2000/5, 2500/5
Example	DP-812	1500/5

Dimensions



All dimensions in mm

Range Data

Model	Primary Current (Amps)	Burden (VA) Accuracy Class 0.5	Burden (VA) Accuracy Class 1	Weight (grams)
DP-23-100/5	100	-	-	750
DP-23-150/5	150	-	-	750
DP-23-200/5	200	-	1.5	750
DP-23-250/5	250	-	2	750
DP-58-300/5	300	1.5	3	900
DP-58-400/5	400	1.5	3	900
DP-58-500/5	500	2.5	5	900
DP-58-600/5	600	2.5	5	900
DP-58-800/5	800	2.5	7.5	900
DP-88-1000/5	1000	5	20	1050
DP-812-1200/5	1200	6	25	1250
DP-812-1500/5	1500	7.5	30	1250
DP-812-1600/5	1600	7.5	30	1250
DP-816-2000/5	2000	15	25	4300
DP-816-2500/5	2500	15	30	4300