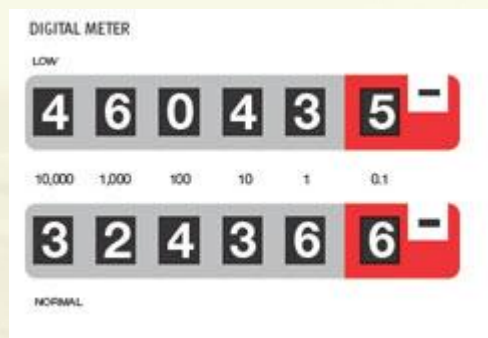




How to read your electricity meter

Reading your electricity meter is easy once you know how. Use these simple instructions to find out how your electricity meter works.



Digital meter

Your digital meter displays readings in one row of figures (single register) or two rows (two registers)

Reading a single register digital meter

Write down the numbers shown from left to right. Ignore the last figure marked 0.1

Reading a digital meter with two registers

If your tariff gives you lower priced off-peak electricity your meter may have two rows of figures like the one in the picture.

Typically the top row records the off-peak electricity you use. It is marked LOW or NIGHT.

01803 297179 | 01803 299488